

HOUSTON, TEXAS www.liftmoore.com
PHONE: (713) 688-5533 • FAX: (713) 688-6324
FAX: (800) 824-5559 (USA & CANADA)

Operating & Installation Instructions

Manual Out / Crank Down 12K Ft.-Lb. Outriggers

!ATTENTION!

KEEP THIS MANUAL WITH THE CRANE. OPERATION INSTRUCTIONS ARE CONTAINED IN A SEPARATE MANUAL. NEW OPERATORS SHOULD READ AND BE FAMILIAR WITH THE OPERATING INSTRUCTIONS BEFORE OPERATING THIS CRANE.

ORDER PARTS USING PART NUMBER, CRANE MODEL NUMBER AND CRANE SERIAL NUMBER TO ASSURE ACCURACY OF ORDERS.

**TABLE OF CONTENTS
P/N 22231**

**MANUAL OUT / CRANK DOWN OUTRIGGER
12K FT.-LB.**

| <u>DESCRIPTION</u> | <u>LOCATION</u> |
|---------------------------------|------------------------|
| TABLE OF CONTENTS..... | F1121-I / P.2 |
| OPERATING INSTRUCTIONS..... | F1121-I / P.3 |
| INSTALLATION INSTRUCTIONS | F1121-I / P.4 |
| INSTALLATION DRAWING..... | DWG.50664-F |
| OUTRIGGER ASSEMBLY DRAWING..... | DWG.58247-G |
| DETENT PIN ASSEMBLY | DWG.32492-C |



OPERATING INSTRUCTIONS

MANUAL OUT / CRANK DOWN OUTRIGGER 12K FT.-LB.

Before using the crane, the outriggers must be set properly. Blocking the front wheels of the truck and setting the parking brake is advised to prevent the truck from rolling.

Always keep the truck as level as possible when operating the crane. Set the outriggers on firm ground that will not yield under load.

Check for overhead obstructions and especially for electrical wires. The crane must always be more than 10 Feet away from electrical wires.

Raise the outrigger detent pin and pull the outrigger out until the pin is engaged in the stop hole. Do not use the outrigger unless this pin is fully engaged. There are only two positions for the pull out section, either fully retracted or fully extended.

Manually lower the innermost-telescoping portion of the jack by pulling out a hitch pin, which hold the manual outrigger section in place. Select a desired height then place the hitch pin into the jack tube. Use a hair clip pin to secure the hitch pin in place. Then crank the jack until there is lifting of the truck bed. The higher the truck, the less the truck must tilt to counterbalance the crane and the load. Leave the truck wheels in contact with the ground. If equipped, set the opposite side outrigger using the same method.

The outrigger is set and the crane is ready for use.

NOTE: At no time should the tires on the opposite side from the lifting side be raised off the ground. If this occurs, relocate the truck closer to the load.

Do not operate the crane until you have read and understand the crane's operation as explained in the manual.

To put up the outrigger, crank the outrigger so that the cranked section is fully raised, then raise the manual portion by pulling out the hitch pin. After fully raising the manual portion, secure it with the hitch pin. Lift the detent pin and slide the outrigger in. Make sure the detent pin is engaged into the outrigger. The outrigger can slide out during a sharp turn if the detent pin is not engaged.



INSTALLATION INSTRUCTIONS

MANUAL OUT / CRANK DOWN OUTRIGGER 12K FT.-LB.

Refer to drawing No. 50664 for outrigger layout.

Read these instructions completely before starting installation.

This kit includes the outrigger center tube, with manual pullout section(s), and a crank down jack.

Before mounting the outrigger center tube, orient the outrigger so that the manual pull out section is on the same side of the truck as the crane.

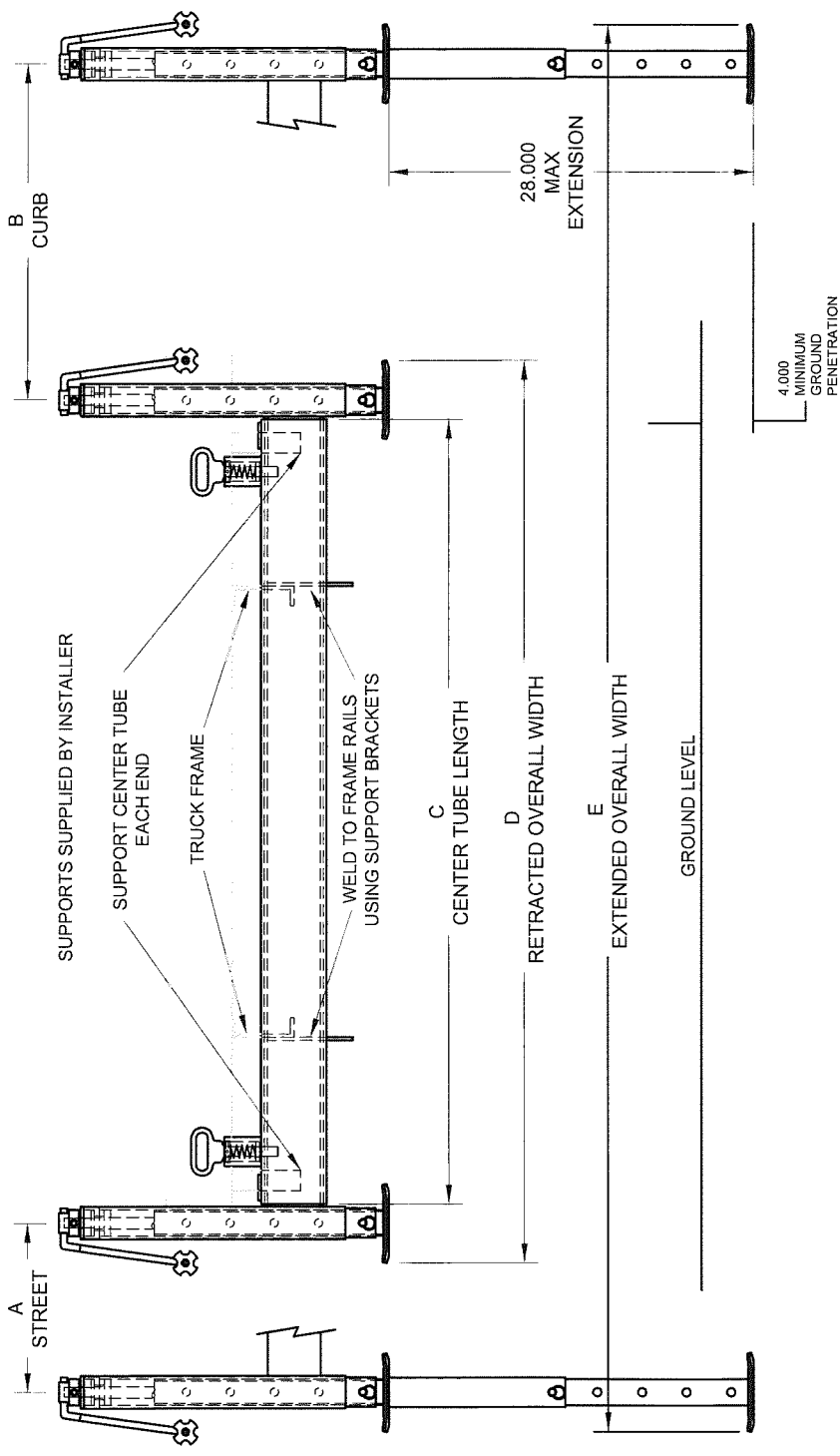
IMPORTANT: The outrigger center tube must be supported at the truck frame, at its outer end under the crane's structural support, and at the end opposite the crane. The center tube should not be supported by the body sheet metal.

Locate the outrigger as close to the crane as possible.

1. Set the outrigger with clearance from the truck body so that the pull out or extendable portion will clear the body when fully retracted. Set the vertical height so that the outrigger will be able to penetrate at least 4" below the ground. The outrigger jack is approximately 24" long when retracted. It extends a maximum length of approximately 52". The crank travel length is 14" and the total extension is 28".
2. Fabricate an "L" shaped mounting bracket similar to the one shown on drawing 50664 (also see drawing for center tube dimensions). The bracket is not furnished. **Weld** the cross tube securely to the bracket. This will provide support for the outrigger at the truck's frame.
3. Weld the outer end of the cross tube securely to the crane support structure using 4" channel or stronger steel bars. This outer end of the cross tube must be supported to carry the crane load and prevent bending of the center tube, and/or truck body. This also should be done below the crane and on the side opposite the crane.
4. Check the outrigger for operation. Especially note that the detent pins on the pull out and drop down sections fully engage in all operating positions.

Place labels on the crank down jacks warning of crushing injury. The outrigger is ready for use!





| MODEL | DESCRIPTION | DIMENSION A | DIMENSION B | DIMENSION C | DIMENSION D | DIMENSION E |
|-------------|-----------------|-------------|-------------|-------------|-------------|-------------|
| MODEL 38851 | 30CMOCD-15SMOCD | 15" | 30" | 86" | 95" | 140" |
| MODEL 38860 | 24CMOCD-15SMOCD | 15" | 24" | 70" | 79" | 118" |
| MODEL 38862 | 30CMOCD-15SMOCD | 15" | 30" | 81" | 90" | 135" |
| MODEL 38885 | 30CMOCD-SFXNJ | 0" | 30" | 60" | 64.5" | 94.5" |
| MODEL 38927 | 30CMONJ-SFXNJ | 0" | 30" | 88" | 88.75" | 118.75" |
| MODEL 38928 | 30CMONJ-SFXNJ | 0" | 30" | 82" | 82.75" | 112.75" |
| MODEL 38955 | 25CMOCD-25SMOCD | 25" | 25" | 72" | 81" | 131" |
| MODEL 39016 | 30CMOCD-SFXCD | 0" | 30" | 85" | 94" | 124" |



Houston TX
 (713)-688-5533
 www.liftmoore.com

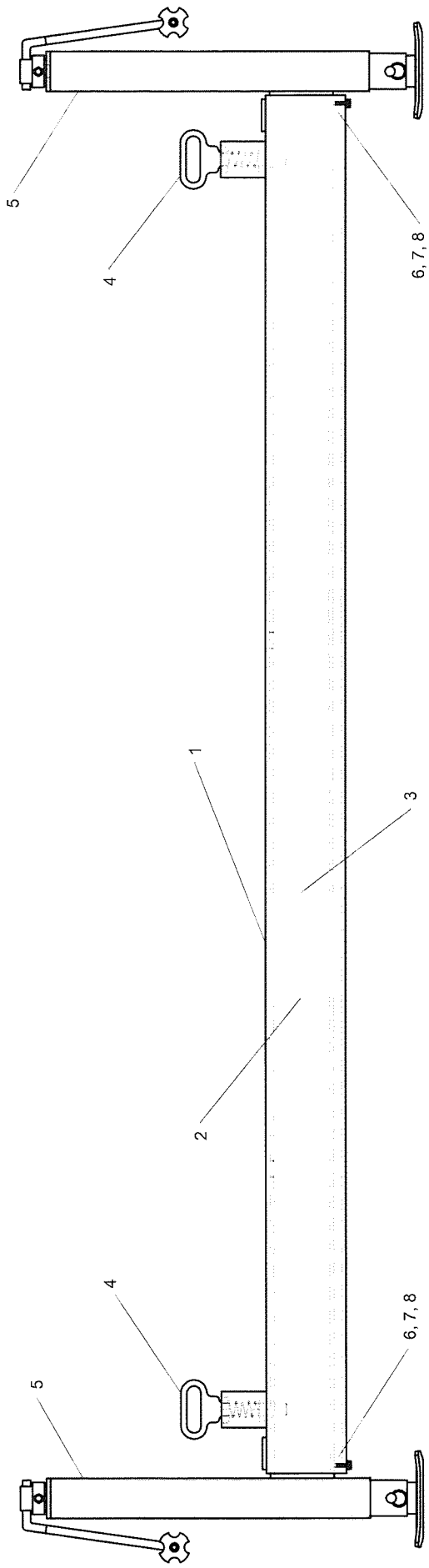
DRWN BY: JC

DATE: 04/06/10

OUTRIGGER 12K MOCD INST
 ALL 12K MOCD; 1/4 WALL STRT/CURB

DRAWING NO.

50664-F



| ITEM | DESCRIPTION | OUTRIGGER | | | | | | | |
|------|-------------------|-----------|-----------|-----------|-----------|-----------|-----------|-----------|-----------|
| | | 38851 QTY | 38860 QTY | 38862 QTY | 38885 QTY | 38927 QTY | 38928 QTY | 38955 QTY | 39016 QTY |
| 1 | CENTER OUTR. | 17761 | 18092 | 33517 | 16712 | 22780 | 22785 | 22063 | 23608 |
| 2 | STREET SIDE OUTR. | 22225 | 22225 | 22225 | NONE | NONE | NONE | 22065 | NONE |
| 3 | CURB SIDE OUTR. | 22221 | 22282 | 22221 | 22221 | 22778 | 22778 | 22065 | 22221 |
| 4 | DETENT ASSY | 32492 | 32492 | 32492 | 32492 | 32492 | 32492 | 32492 | 32492 |
| 5 | CRANK DOWN JACK | 30761 | 30761 | 30761 | 30761 | NONE | NONE | 30761 | 30761 |
| 6 | SPACER | 22216 | 22216 | 22216 | 22216 | 22216 | 22216 | 22216 | 22216 |
| 7 | SCREW | 30457 | 30457 | 30457 | 30457 | 30457 | 30457 | 30457 | 30457 |
| 8 | LOCK WASHER | 30889 | 30889 | 30889 | 30889 | 30889 | 30889 | 30889 | 30889 |

*SEE INSTALLATION DRAWING FOR OUTRIGGER MODEL NUMBER DESCRIPTION

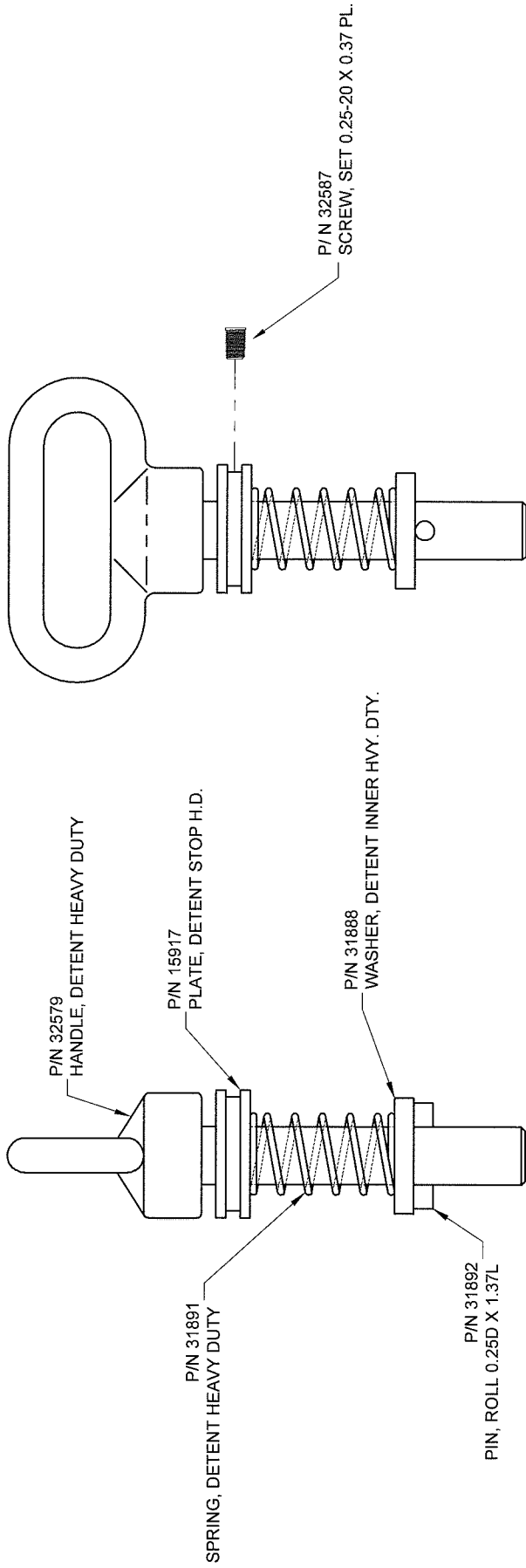


Houston TX
 (713)-688-5533
 www.liftmoore.com

DRWN BY: JC
 DATE: 04/06/10

OUTRIGGER 12K MOCD PARTS
 ALL 12K MOCD; 1/4 WALL STRT/CURB

DRAWING NO.
58247-G



P/N 32579
HANDLE, DETENT HEAVY DUTY

P/N 15917
PLATE, DETENT STOP H.I.D.

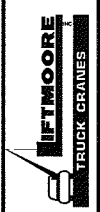
P/N 31888
WASHER, DETENT INNER HVY. DTY.

P/N 31891
SPRING, DETENT HEAVY DUTY

P/N 31892
PIN, ROLL 0.25D X 1.37L

P/N 32587
SCREW, SET 0.25-20 X 0.37 PL.

Houston TX
(713)-688-5533
www.liftmoore.com



DETENT, INNER ASSEMBLY H.I.D.

DRWN BY: JC
DATE: 01/24/07

DRAWING NO.
32492-C